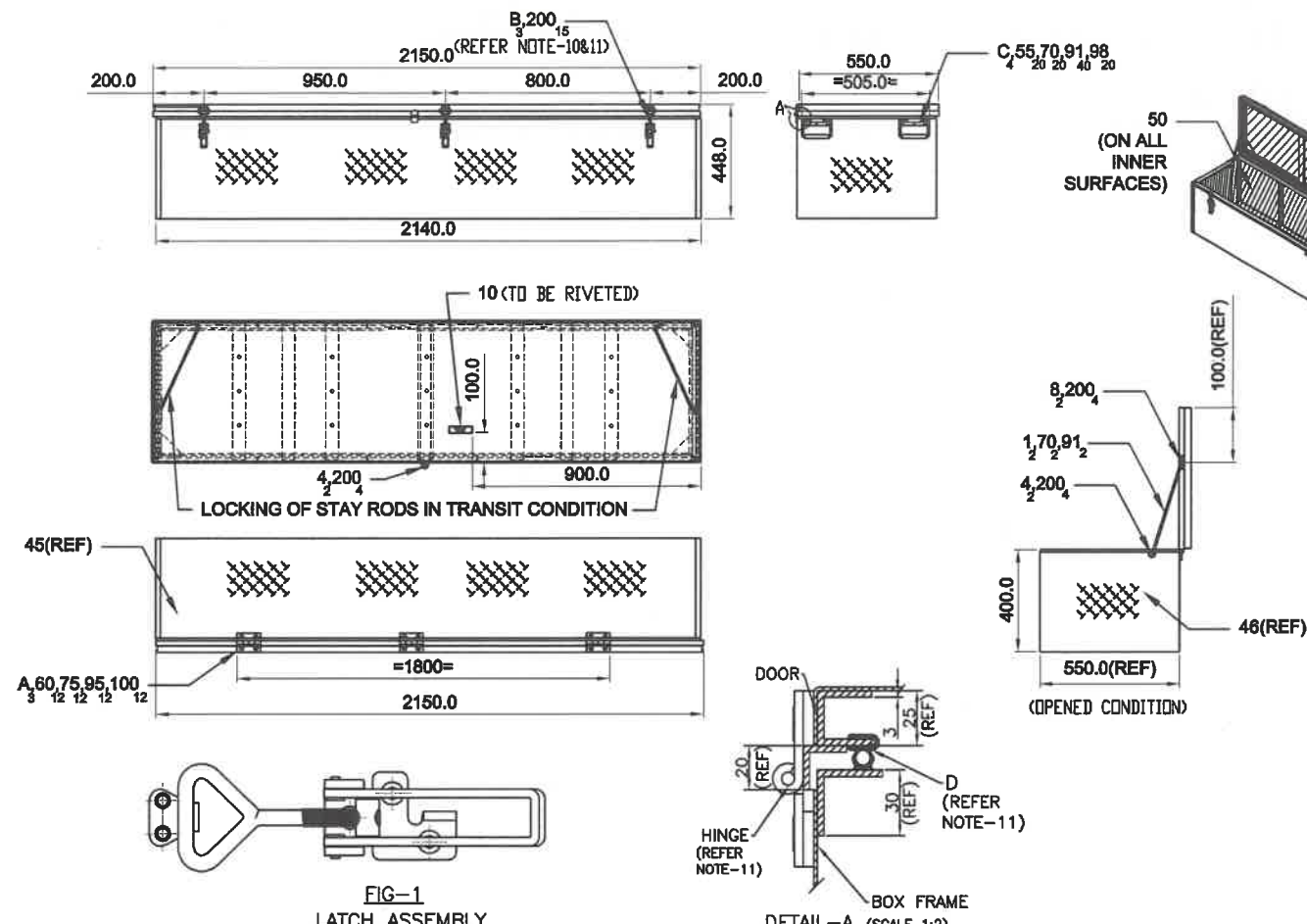


ECIL PROPRIETARY
 THIS DOCUMENT IS THE PROPERTY OF ECIL. NO EXPLOITATION OR TRANSFER OF ANY INFORMATION CONTAINED HEREIN IS PERMITTED IN THE ABSENCE OF AN AGREEMENT WITH ECIL AND NEITHER THE DOCUMENT NOR ANY SUCH INFORMATION MAY BE RELEASED WITHOUT THE WRITTEN CONSENT OF ECIL.

ORIGINAL
 (STAMPED IN GREEN)

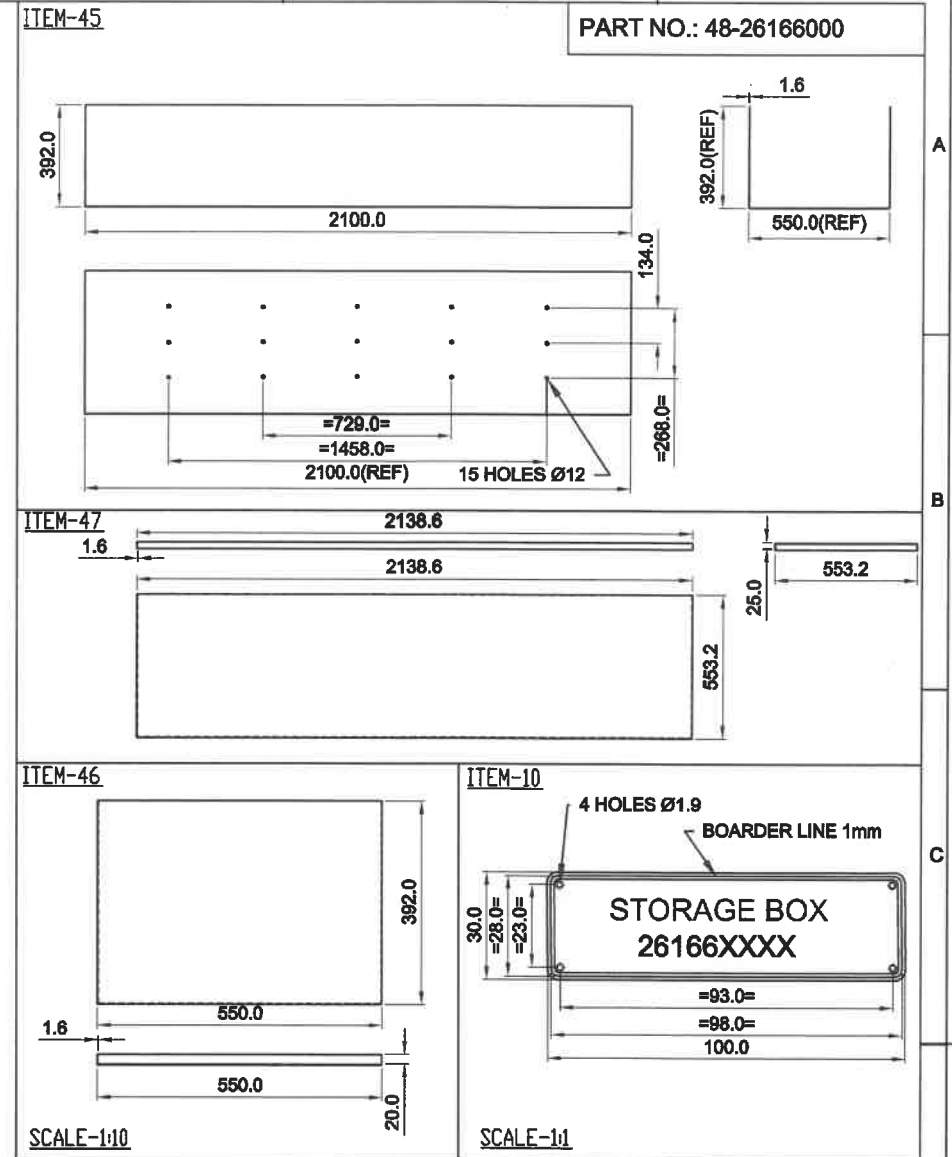
F-05-02-15 (1/2) ISSUE 2 EFFECTIVE DATE: 2022-10-26



- NOTE:**
- REFER TABLE-1 SHEET 001 FOR MATERIAL
 - UNSPECIFIED TOLERANCES AS PER IS:2102 COARSE.
 - DEBURR ALL SHARP EDGES & ROUND OFF ALL CORNERS.
 - ITEM-4 TO BE RIVETED TO THE BOX AND COVER FOR LOCKING AS SHOWN.
 - REFER TABLE-2 FOR ITEMS TO BE FITTED TO STORAGE BOX ASSY & SCOPE OF SUPPLY.
 - STORAGE BOX ARE FOR MOBILE APPLICATIONS (FITTED ON TOP OF THE VEHICLE.)
 - MOUNTING AREAS OF LATCHES, HANDLES & HINGES TO BE STRENGTHENED/MODIFIED AS REQUIRED DEPENDING ON THE SIZE & MODELS OF ITEMS AS PER TABLE-2.
 - FOR ALL ITEMS HOLES TO BE MATCH DRILLED & RIVETED/SCREWED AT APPROPRIATE LOCATIONS TO MEET THE FUNCTIONAL REQUIREMENTS.
 - ITEM-50 ADHESIVE BACKED FOAM SHOULD BE STRUCK INSIDE THE BOX.
 - MATERIAL FROM TABLE-1 & TABLE-2 ARE IN DETAIL-A & FIG-A ARE TO BE FIXED BY HOLDING THE DOOR IS SUFFICIENTLY COMPRESSED AGAINST GASKET (ITEM-D) SO THAT DOOR IS HELD TIGHT AGAINST THE BOX.
 - ALL FASTENERS ARE TO BE FULLY TIGHTENED BY APPLYING LOCKTITE COMPOUNT.
 - 4 HOLES Ø10 TO BE DRILLED ON ALL CORNERS OF BOX.
 - ALL SHEETS TO BE CENTRALIZED OVER THE BOX & WELDED AS PER BEL PS 504/EQVT.
 - FOR FIXING OF HINGES, LATCHES & ITEM-4 NECESSARY SS METALLIC SPACERS TO BE USED.
 - DRIVING RAIN TEST TO BE CONDUCTED ON THE BOX AND THERE SHOULD NOT BE ANY LEAKAGES.
 - NECESSARY RELIEF TO BE GIVEN ON TREAD SHEET FOR HOLES.
- FINISH:**
- WELDED BOX ASSY & COVER ASSY TO BE CHROMATE CONVERTED AS PER BEL PS252/EQVT.
 - ETCH PRIMER TO BE DONE AS PER BEL PS270/EQVT FOR ALL TREAD SHEETS ITEM 45, 48 & 47 BEFORE PAINTING.
 - ALL STEEL PARTS ARE TO BE ZINC PLATED/SPRAY AS PER BEL PS713-ZN-12B/PS739.
 - ALL STAINLESS STEEL PARTS TO BE PASSIVATED AS PER BEL PS251/EQVT.
 - PAINTING OF EXTERNAL & INTERNAL SURFACES AS PER BEL PS613-OD298-MT/EQVT.
 - FIRST OFF SAMPLE TO BE APPROVED BY ECIL.
 - AFTER WELDING AND BEFORE PAINTING OF BOX & COVER, APPLY SIKAFLEX ON ALL OPEN AREAS FOR OUTER SURFACES TO AVOID WATER SEEPAGE.
- ENGRAVING:**
- BORDER LINE & TEXT SHALL BE LASER ENGRAVED AND FILLED WITH BLACK PAINT.
 - ALL CHARACTERS TO BE CENTRALIZED UNLESS OTHERWISE SPECIFIED.
 - LASER ENGRAVING TO BE DONE AS PER BEL PS940/EQVT.
 - TEXT SHOULD BE BOLD AND HEIGHT 6mm AS SHOWN IN DRAWINGS.

ITEM NO	DESCRIPTION	MATERIAL	QTY
1	STAY ROD	STEEL FM CD ROUND-8	2
4	PAD LOCK ANGLE	STEEL MS EQL ANGLE-25x25x3	4
8	CLAMP	STEEL CARBON HR3 SHEET-3	2
10	NAME PLATE	AL GR.19500 Hx4 SHEET-1.0	1
12	GUSSET	AL 64430-T6-SHEET-3.00	4
15	FLAT	AL 64430-T6-SHEET-6.30	8
6-20	NOT ALLOTTED		-
21	L ANGLE-1_2263		2
22	L ANGLE-2_463	ALUMINIUM 64430 ANGLE-20x20x3	2
25	L ANGLE-5_394		8
31	L ANGLE-15_2250		4
32	L ANGLE-16_450	ALUMINIUM 64430 ANGLE-30x30x3	4
33	L ANGLE-17_340		4
41	C CHANNEL-1_2250		2
42	C CHANNEL-2_450	ALUMINIUM U SECTION-25x25x3	2
45	TREAD SHEET-1		1
46	TREAD SHEET-2	ALUMINIUM TREAD SHEET-1.6	2
47	TREAD SHEET-3		1
50	FOAM-1	2130x394x20	2
	FOAM-2	2130x540x20	2
	FOAM-3	540x394x20 EPE/XLPE	2
55	SCREW-M5	SCREW HEX SST AISI 304-M5x20	20
60	SCREW-M8	SCREW HEX SCT CSK SST 304-M8x30	12
70	NYLOC NUT-M5	NUT NYLOC AISI 304-M5	22
75	NYLOC NUT-M8	NUT NYLOC AISI 304-M8	12
91	PLAIN WASHER-M5	WASHER PLAIN SST AISI 304-M5	40
95	PLAIN WASHER-M8	WASHER PLAIN SST AISI 304-M8	12
98	SPRING WASHER-M5	WASHER SPRING SST-M5	20
100	SPRING WASHER-M8	WASHER SPRING SST-M8	12
200	RIVET-5x12	RIVET SNAP HD SST AISI 304-5x12	50

DRAWINGS
 FOR DEVELOPMENT



ITEM NO	DESCRIPTION	MATERIAL	QTY	REMARKS
A	FLAT HINGE	DARSHANA MAKE P/N:DHIM-10080-SS	3	COVER ASSY TO BOX ASSY (REAR)
B	LATCH ASSY	DARSHANA MAKE P/N:DSNL-10034-SS	3	COVER ASSY TO BOX ASSY (FRONT)
C	SPRING LOADED HEAVY DUTY HANDLES	DARSHANA MAKE:DCPH-140-BZ(OR) EQUIVALENT; AISI 304 GRADE	4	STORAGE BOX ASSY
D	GASKET (SLIP ON)	AUTOMOBILE DOOR RUBBER GASKET DARSHANA MAKE:DGEWC-1410-H	6m	STORAGE BOX ASSY
E	RIVETS & SCREWS	ALL RIVETS SCREWS, WASHERS & NUTS TO BE SS AISI 304 GRADE	-	AS PER REQUIREMENT

ISS. NO.	REV. NO.	ISSUED FOR	PROJ.NO.	ISSUE SHT.NO	DATE	APPD
1	RO	DEVELOPMENT	3636	- - -	21.10.25	PMJ

HIMSHAKTI STORAGE BOX

DRN	DRG.CHKD.	DES.	DES.CHKD.	APPD.
				PMJ
ELECTRONICS CORPORATION OF INDIA LIMITED COMMUNICATION SYSTEMS GROUP HYDERABAD-500062				PROJ.NO.: 3636
DRG.NO. FB-26166-A2				SHT. 1 OF 2
REV. 0				

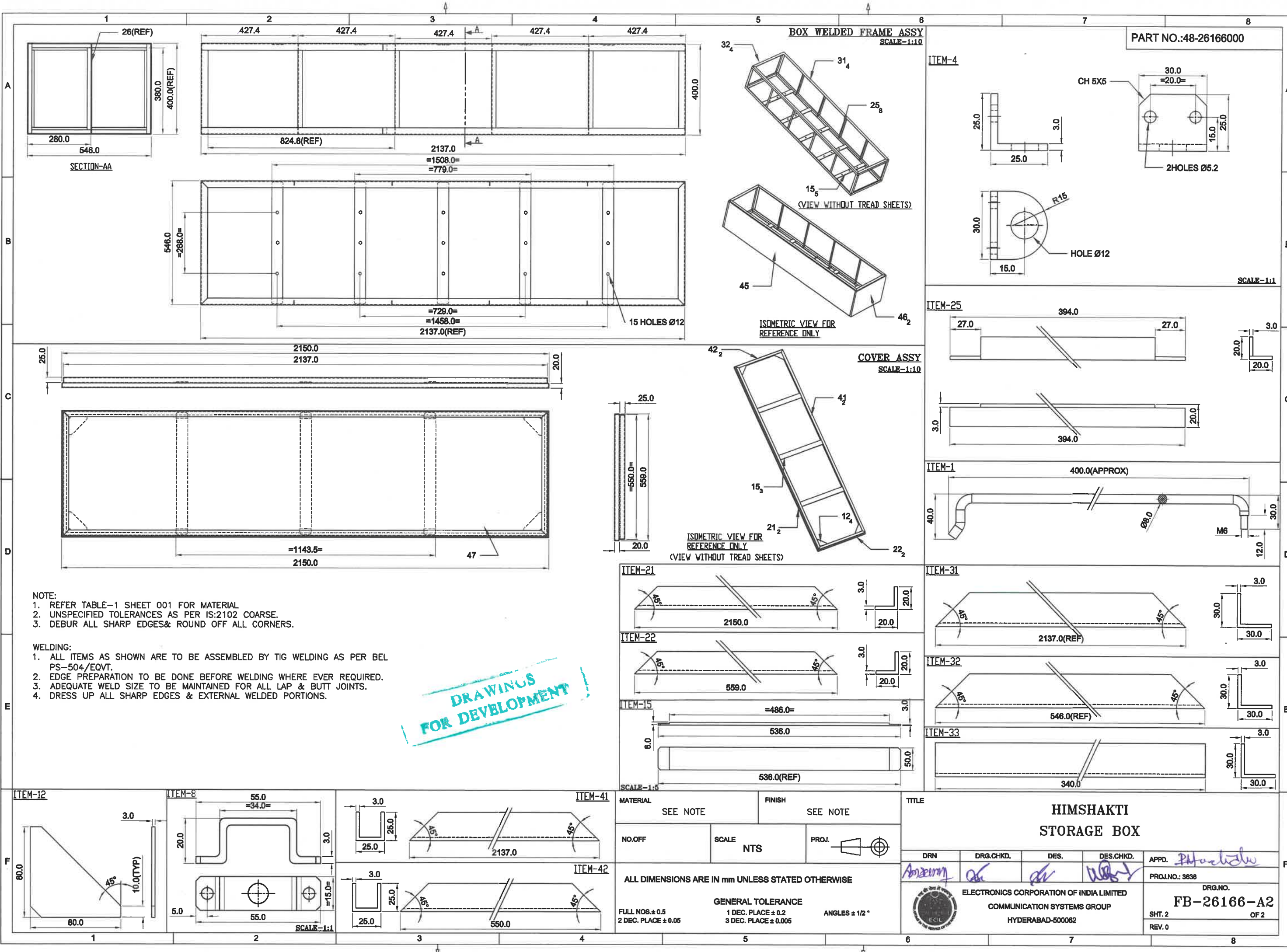
TITLE	DRAWING NO.	NO.	LOC.	DESCRIPTION	DRN DATE	APPD
REFERENCE DRAWINGS						
				REVISIONS		

MATERIAL	SEE NOTE	FINISH	SEE NOTE
NO.OFF	SCALE	PROJ.	
ALL DIMENSIONS ARE IN mm UNLESS STATED OTHERWISE			
GENERAL TOLERANCE			
FULL NOS. ± 0.5		1 DEC. PLACE ± 0.2	
2 DEC. PLACE ± 0.05		3 DEC. PLACE ± 0.005	
ANGLES ± 1/2°			

THIS DOCUMENT IS THE PROPERTY OF ECIL. NO EXPLOITATION OR TRANSFER OF ANY INFORMATION CONTAINED HEREIN IS PERMITTED IN THE ABSENCE OF AN AGREEMENT WITH ECIL AND NEITHER THE DOCUMENT NOR ANY SUCH INFORMATION MAY BE RELEASED WITHOUT THE WRITTEN CONSENT OF ECIL.

ORIGINAL
(STAMPED IN GREEN)

F-05-02-15 (2/2) ISSUE 2 EFFECTIVE DATE: 2022-10-26



MATERIAL SEE NOTE		FINISH SEE NOTE		TITLE HIMSHAKTI STORAGE BOX			
NO.OFF	SCALE NTS	PROJ.		DRN	DRG.CHKD.	DES.	DES.CHKD.
ALL DIMENSIONS ARE IN mm UNLESS STATED OTHERWISE				APPD. <i>[Signature]</i>			
GENERAL TOLERANCE FULL NOS. ± 0.5 1 DEC. PLACE ± 0.2 2 DEC. PLACE ± 0.05				ELECTRONICS CORPORATION OF INDIA LIMITED COMMUNICATION SYSTEMS GROUP HYDERABAD-500062			
ANGLES ± 1/2°				PRJ.NO.: 3636			
				DRG.NO. FB-26166-A2			
				SHT. 2 OF 2			
				REV. 0			